



Norah Head Lighthouse Land Manager Board

P.O. Box 4 Toukley, NSW 2263 Australia

May 2021 Newsletter

Covid 19 Virus and the Norah Head Lighthouse Reserve

The Norah Head Lighthouse Reserve Land Manager Board encourages everyone to come and enjoy the Lighthouse Reserve while being mindful in practicing the 1.5m social distancing.

<https://norahheadlighthouse.com.au/>

<https://www.facebook.com/NorahHeadLighthouse/>

ACCOMMODATION & WEDDINGS AVAILABLE

Visit our web site for details or call our Site Manager, Tracy Stubbings on 0452 564 102.

TOWER TOURS

Due to the slowness of the Covid Vaccine roll out the Board cannot yet confirm when it can recommence tours

NOTICE OF RESERVE CLOSURE

The Norah Head Lighthouse Reserve will be closed to allow a new path to be constructed to the beach for a period of two weeks, Monday to Friday on the following dates:

WEEK 1 Monday 24th May 2021 to Friday 28th May 2021 inclusive

WEEK 2 Monday 31st May 2021 to Friday 4th June 2021 inclusive

The Reserve gate at the Bush Street roundabout will remained closed to the public for the two working weeks.

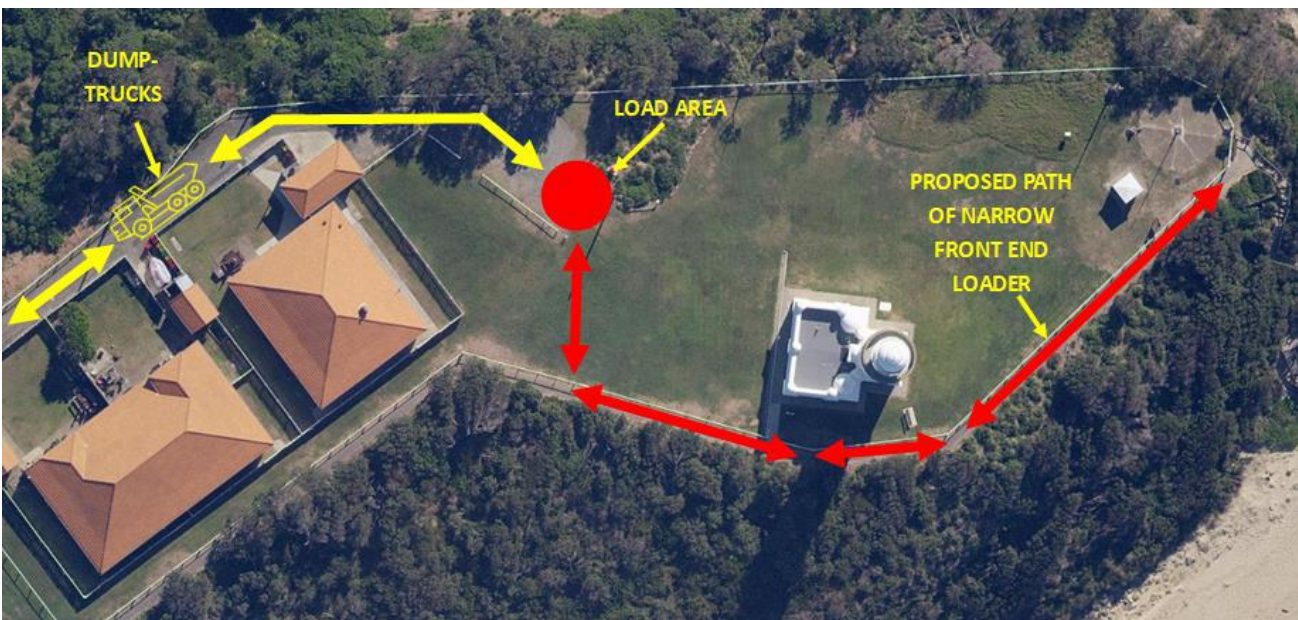
The Reserve will be open for the weekend (Saturday and Sunday) of 29th and 30th May 2021. Access to the beach by the Lighthouse stairs will be available.

The closure is necessary to ensure the safety of the public as the Reserve will be a work site. The paved path will not be available, and visitors will be directed to walk on the grass. The Norah Head Lighthouse Reserve Land Manager Board apologises for any inconvenience.

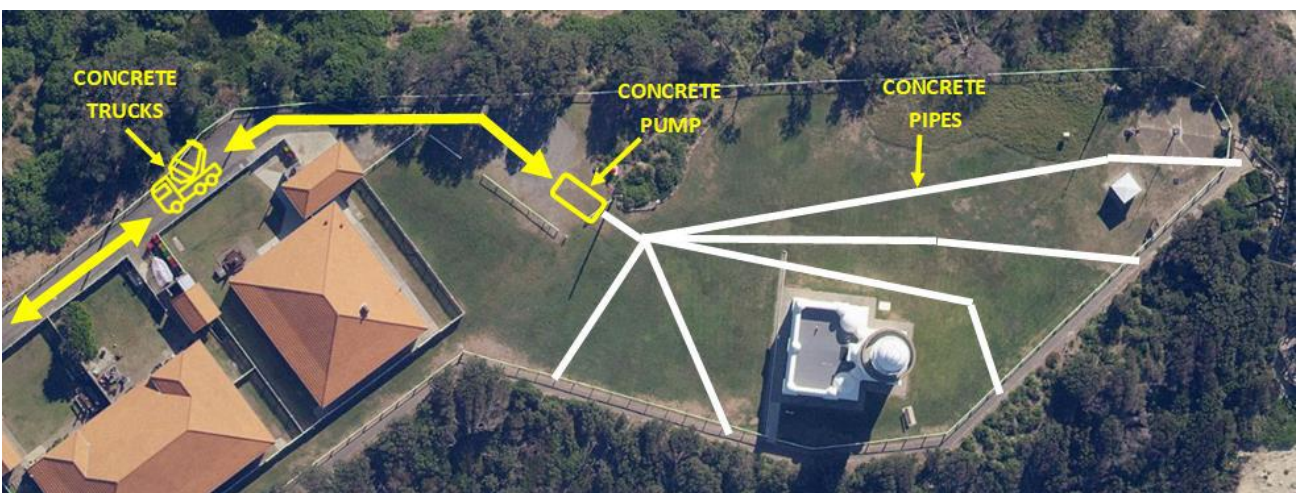
YOU CAN VIEW PAST NEWSLETTERS HERE



Aerial showing location of path to be reconstructed.



Aerial showing areas impacted by excavating existing bitumen path



Aerial showing areas impacted by pumping concrete

BUSY MAY DAYS FOR THE RESERVE

Thanks to NSW State Government funding, Covid Stimulus Funding and Crown Lands Infrastructure Funding the Norah Head Lighthouse Reserve Land Manager Board has planned to undertake several much-needed maintenance items in May 2021.

- Glen Walsh Electrical will be installing new CCTV on the Reserve, ten new cameras in all that will hopefully deter the many vandal attacks on the reserve in the last year.
- There is no accommodation booked for the two weeks of the reserve closure.
- Civil Movement Pty Ltd will be constructing the new path from Quarters Q1 to the Lighthouse stairs.
- Civil Movement Pty Ltd will also be replacing slippery pebble crete paths at all three quarters.
- In all three Quarters West Electrical and Communications will install new stainless steel meter boxes with new Residual Current Circuit Breakers with Overcurrent Protection (RCBO's) to replace the old, now nonstandard, circuit breakers
- Quarters Q2, the home of our onsite manager will be refurbished.
 - This will involve Tracy Stubbings moving into Quarters Q1 for two weeks.
 - Q2 Furniture will be stored in a shipping container on site.
 - Greg Hughes Painting will repaint the whole of the interior of Quarters Q2.
 - Central Coast Floor Sanding will sand and reseal the floors.

This work will bring Quarters Q2 up to the standard of Quarters Q1 and Q3 that were refurbished last year.

SURVEYORS

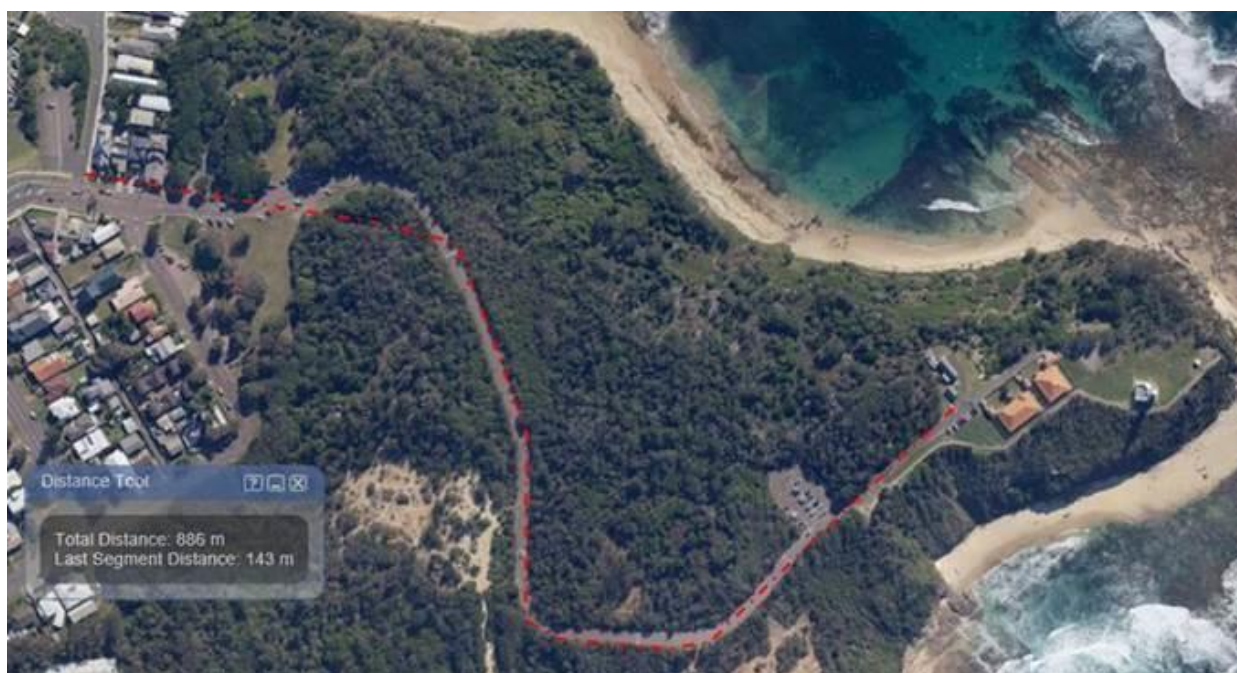
Th NHLRLM Board engaged Barry Hunt Associates, Registered Surveyors & Land Development Consultants, to extend the extent of survey on the reserve to allow planning for a proposed new shop/café/museum, plan increasing the number of cars the Reserve's Public Carpark can accommodate as well as allow planning of a future new path from the Mariner's Memorial to Quarters Q1 that would not be as steep and meet disability access standards.

3 PHASE POWER

Over the past decade the demand for electricity has increased to the extent that the single-phase power supplied to the reserve has become inadequate.

The new public toilets, opened in 2017, placed an increased load on the pumps in our private sewerage system. There are regular problems as the single phase grinder pumps fail to cope with the additional loads. Because of the lack of 3 phase power the NHLRLM Board is not able to install larger 3 Phase pumps, more suitable for the increase in sewerage to be treated. In addition, we would like to air-condition the three lighthouse quarters on the reserve as well as being able to provide additional power to new commercial enterprises, such as a permanent café, that we would like to attract to the Reserve.

The aerial below from SIX Maps indicated that there is approximately 900m distance of existing single phase to the site.



The NHLRLM Board is aware that this is an awfully expensive project that needs Ausgrid approval. Only specialised Level 3 electricians are approved to undertake the design of poles and wires. A contract has been let to B & C Electrical & Communications Pty Ltd t/a ELESERVE to prepare an Ausgrid approved design that will allow the NHLRLM Board to request quotations (RFQs) to construct.

The design and Ausgrid approval takes many months. Once the Ausgrid approval to the design is given, the NHLRLM Board will contact selected contractors to provide quotations.

DARKINJUNG LOCAL ABORIGINAL LAND COUNCIL



The NHLRLM Board realises that the successful management of the Reserve requires a respectful, open, culturally aware relationship between Reserve Management and the Aboriginal community. NHLRLM Board has recently met with the Darkinjung Local Aboriginal Land Council (DLALC) staff to foster a closer relationship.

The outcome is that a DLALC Board Member will attend future NHLRLM Board meetings to promote a closer relationship and increase DLARC input into events held on the Reserve.

LIGHTHOUSE TOWER MAINTENANCE

The NHLRLM Board has again allocated funds in 2021 to have Mark Sherriff OAM to continue with maintenance on the tower that is continually attacked by the extreme weather events at times.

The NHLRLM Board would also like to thank our Tour Guides who, when not selling souvenirs at our pop up shop, visit the tower on a regular basis to empty the humidifiers that are in place, polish the brass work, clean the stairs from dust and keep the inside in first class condition, ready for the day when the NHLRLM Board is able to resume Tower Tours.

SITE MANAGER AGREEMENT

In April the NHLRLM Board entered into a new Site Management Agreement with Salt & Sand Management Pty Ltd and Tracy Stubbings. This will apply for a three year term with the provision for the Principal to offer a further period of a three year extension. By entering into this new agreement to extend Tracy Stubbings tenure as Site Manager the NHLRLM Board recognise her commitment in ensuring the success of the Reserve.



Because of Tracy Stubbings efforts the Norah Head Lighthouse Reserve is once again a finalist in the @localbusinessawards_ Specialist Business Category!



Great fun last week when @star1045 paid our Reserve Manager Tracy a visit to see 'the Best Backyard on the Coast'. No contest, really!